

ST MICHAEL & ALL ANGELS, WITHYHAM



# PARISH MAGAZINE



ALL SAINTS, BLACKHAM

December 2022 – January 2023



Eyelash extensions, waxing, massage,  
manicures, spray tanning, A-lift facials  
Tel: 07400 962020  
Email: v.chamberlain455@gmail.com

## Hartfield Playschool



Founded 55 years ago, Hartfield  
Playschool is set in The Old  
Station, with beautiful extensive  
gardens. We take children aged  
2-5 years. Open from 9.00am –  
3.00pm Monday to Friday, term time only.  
Please visit [www.hartfieldplayschool.co.uk](http://www.hartfieldplayschool.co.uk)  
call 01892 770830  
or email [office@hartfieldplayschool.co.uk](mailto:office@hartfieldplayschool.co.uk)

## CHAIR CANING, SEAGRASS WORK #-##-##-##-##-##-##-##-##-## MIKE PARCELL

1 Oak Cottages, Chuck Hatch,  
Hartfield, TN7 4EX  
Tel: 01892 770764



Come and enjoy your fishing with CDAA.

All ages and abilities are welcome.

We have a thriving junior section, a  
welcoming ladies section and both  
weekend and midweek matches running  
nearly all year round.

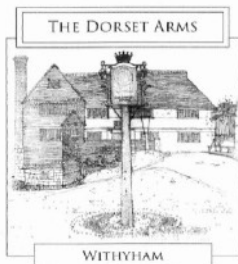
We have waters to suit most styles of fishing across  
Sussex and Kent from half acre ponds to a 280 acre  
reservoir plus some river & canal.



[www.crowboroughanglers.org.uk](http://www.crowboroughanglers.org.uk)

Tel: 07873 322562

[email@crowboroughanglers.org.uk](mailto:email@crowboroughanglers.org.uk)



THE DORSET ARMS  
BUCKHURST PARK, WITHYHAM  
HARTFIELD TN7 4BD



## The Dorset Arms, Withyham

The De La Warr family welcome you to The Dorset Arms.

A 16<sup>th</sup> Century Inn open all day, seven days a week,  
serving excellent local seasonal produce. Comfortable  
rooms and interesting walks including the 100 Aker  
Wood of Winnie the Pooh.

01892 770278

[enquiries@dorsetarms.co.uk](mailto:enquiries@dorsetarms.co.uk)

## ADAM C WILES

Quality Carpentry and Building  
Established 30 Years

All aspects of Carpentry and Joinery undertaken

Internal Alterations and Extensions

Withyham, East Sussex

Telephone: 01892 770554

Mobile: 07818 434506

[wilesbuild@sky.com](mailto:wilesbuild@sky.com)

# From the Rectory

Dear Friends,

Another Christmas approaches! It is easy to forget that last year Covid-19 reared its head again and we had a restricted Christmas, following all the restrictions of 2020. So, this year is the first normal Christmas for three years.

In each of the past two years there was a lot of publicity about whether Christmas would be ‘cancelled’; some wondered whether this would be the first time ever. There is a commonly held view that Oliver Cromwell banned Christmas during the years of The Commonwealth after the death of Charles I in 1649 until The Restoration of Charles II in the year 1660.

It is certainly true that during Cromwell’s time as Lord Protector (1653-1658) stricter laws were passed forbidding people from holding or attending special Christmas Church services. From 1656 legislation was passed to ensure that every Sunday was stringently observed as a holy day. In contrast, shops and markets were told to stay open on 25<sup>th</sup> December. However, in the City of London soldiers were apparently ordered to patrol the streets, seizing any food they discovered being prepared for Christmas celebrations.

It has to be remembered that these measures were taken within the context of the Puritan Movement. Christmas then, as now, was a time of long-cherished rituals and sometimes excessive behaviour. There were objections to additions to the Christian Calendar that were perceived in some quarters to be frivolous. Some Puritan leaders saw Christmas as a wasteful festival that threatened Christian beliefs and encouraged immoral activities. Thus, even before Cromwell’s Protectorate, Parliament had produced legislation that made clear that festival days, including Christmas, were not to be celebrated but spent in respectful contemplation.

Unsurprisingly, the Puritans’ severe restrictions of Christmas celebrations proved very unpopular: pro-Christmas riots even broke out!

We can therefore be grateful that this year the smell of roast turkey and our holly decorations won’t get us arrested! Unlike the last two years, we can again joyfully celebrate the birth of Jesus Christ who changed the course of history for the better and who continues to change individual lives for the better today. Have a very Happy Christmas when it comes.

**James Campbell**

# ANDY SAYERS

## ELECTRICAL SERVICES

DOMESTIC AND COMMERCIAL

### Electricity in safe hands

- Installations, rewires, board upgrades
- Fault finding, maintenance, repairs
- Inspection and testing reports
- Portable appliance testing (PAT)
- Qualified to BS 7671 2018 18th Edition
- Building regulations part P compliant
- Prompt, reliable and competitive rates

T. 07836 256 146 E. andycsayers@gmail.com  
www.andysayerselectrical.com



# RL Computer Solutions



More than 90% of issues resolved onsite within 1 hour



Appointment at your premises – no waiting around



Mac and Windows



Home and small business support



Installation, upgrades & repairs including malware / virus removal



Speed-up & performance solutions



Data recovery and back-up solutions



Tuition from experienced teacher



High quality broadband



Wordpress website expert

Call Roger on:

01342 825 209

roger@rlcomputersolutions.co.uk

## John Waller, Underwoodsmen Ltd

Woven Fencing & Hurdles; Living Willow Structures; Baskets; Garden Structures; Plant Supports & Trellis; Garden Furniture; Tree Surgery; Hedgelaying; Seasoned Logs

### Green Wood Workshop Courses at Bore Place, Chiddingstone

Hurdles & Fencing, Pole Lathe Wood Turning & Chair Making, Willow Plant Supports, Hedgelaying, Coppicing, Charcoal, Basketry, Fruit Tree Maintenance

4 Mount Pleasant Cottages, Blackham TN3 9UH

info@underwoodsmen.co.uk www.underwoodsmen.co.uk

01892 740303 (eves) or 07788 748618



W. SMITHERS & SONS  
EST. 1955

OLD MILL YARD, HIGH STREET, COWDEN, KENT, TN8 7JJ

TEL 01342 850559 FAX 01342 850981 EMAIL

COLIN@WSMITHERS.CO.UK WWW.WSMITHERSANDSONS.CO.UK

Conversions, extensions, listed buildings, joinery, plumbing and heating, kitchens and bathrooms, electrical, roofing, maintenance and repairs and decorating. Covering all types of building work.

# The Parish of St Michael & All Angels, Withyham, with All Saints, Blackham

**[www.withyhamchurch.org](http://www.withyhamchurch.org)**

Rector	<b>The Rev. Canon James Campbell</b> The Rectory, Withyham, TN7 4BA withyhamrector@gmail.com	01892 770069
Churchwarden	<b>Mr Richard Halcrow</b>	01892 770607
Churchwarden	<b>Mrs Jill Pardey</b>	01892 661882
Sexton & Verger	<b>Mr John Collins</b>	01892 662389
Licensed Reader	<b>Mr Donald Yonge</b>	07872 529740
Organist	<b>Mrs Sue Stone,</b> <b>GRSM ARCM DipEd</b>	01892 770978
Deputy Organist	<b>Mr Peter Ellefsen,</b> <b>BSc CEng MIEE</b>	01892 653965
Bell Tower Captain	<b>Mrs Julie Richardson</b>	01892 652008
Hon. Treasurer	<b>Mrs Anne Barker</b>	01892 661393
Hon. Secretary	<b>Mrs Alison Hunnam</b>	01892 770347
Parish Safeguarding Officer	<b>Mr Donald Yonge</b>	07872 529740
Blackham Church	<b>Mrs Sue Schooling</b>	01892 740397
Withyham Flower Guild	<b>Mrs Jill Pardey</b>	01892 661882
Withyham Altar Linen	<b>Mrs Diane Pedder</b>	01892 770240
Withyham Church Cleaning Rota	<b>Mrs Anne Radford</b>	01892 770021
Family Support Work	<b>Mrs Miriam Boobier</b>	01892 662780
Church Administrator	<b>Mrs Bridget Clayton</b> withyhamchurch@gmail.com	01342 826183



**07490 550559**

**01892 309424**

**Nickalls-decor@outlook.com**

All your decorating needs.

Interior / exterior,  
large or small.

Wallpapering, spraying and more.

Call for a free quote.

## Churchwardens' Notes

by Richard Halcrow & Jill Pardey

On the last Sunday in October Matins were held at Blackham, and in the evening the All Souls service was held at Withyham, where we remembered those who had died both recently and in the past. This service was well attended, as was the Remembrance Sunday service on November 13<sup>th</sup> when a trumpeter was present and wreaths were laid on behalf of Withyham Church and the Withyham Parish Council. A service was also held at the Blackham lychgate, where the people of Blackham turned out and stood in the road to witness the laying of wreaths and the reading of names of so many residents of Blackham who gave their lives, particularly in World War One.

We received two quotes from the Royal School of Needlework at Hampton Court to repair the Christmas Altar Frontal. The PCC with advice from Rosemary Cadogan Rawlinson has decided to accept the most expensive quote and get the frontal repaired properly as it is very beautiful and we want it to last for many more years to come.

## TREE SURGERY

Professional Tree Care Service



Fully Qualified & Insured Team

- ✓ Felling and Stump Removal
- ✓ Storm Damage Cleanups
- ✓ Crown Thinning, Lifting and Reduction
- ✓ Hedgecutting

Get in Touch for Free Consultation and Advice

T: 01342 851 385 M: 07808 645 800

W: [www.katsuragardens.co.uk](http://www.katsuragardens.co.uk)

E: [philip@katsuragardens.co.uk](mailto:philip@katsuragardens.co.uk)

**KATSURA GARDENS**  
LANDSCAPING & TREE SURGERY



# Church Calendar – December 2022

**St. Michael and All Angels, Withyham, with All Saints, Blackham**

*(all services at Withyham unless stated)*

<b>Sunday 4<sup>th</sup></b> 2 <sup>nd</sup> in Advent	9.45am 11.00am 6.30pm	Zoom Holy Communion Evensong
<b>Sunday 11<sup>th</sup></b> 3 <sup>rd</sup> in Advent	11.00am 6.30pm	Matins Carol Service at <b>Blackham</b>
<b>Saturday 17<sup>th</sup></b>	6.00pm	Carol Singing at <b>Buckhurst Park</b>
<b>Sunday 18<sup>th</sup></b> 4 <sup>th</sup> in Advent	9.45am 11.00am 6.30pm	Zoom Christingle Nativity Service Carol Service at Withyham
<b>Wednesday 21<sup>st</sup></b>	6.00pm	Outdoor Nativity at <b>The Rectory</b>
<b>Saturday 24<sup>th</sup></b> Christmas Eve	4.00pm 11.00pm	Crib Service Midnight Communion
<b>Saturday 25<sup>th</sup></b> Christmas Day	11.00am	Christmas Day Service with a short Communion Service

## Parish Registers – November 2022

### Funerals

On 21<sup>st</sup> October the funeral took place at All Saints Church, Blackham of Gillian Leone FARNES of Upper Lodge Farm, The Broyle, Ringmer who died on 21<sup>st</sup> September 2022 aged 89, followed by burial in the Churchyard.

On 10<sup>th</sup> November the funeral took place at St. Michael and All Angels Church, Withyham of Peter WALKER of Temple Grove Care Home, Heron's Ghyll and formerly of Spring Cottage, Poundfield Lane, Crowborough, who died on 18<sup>th</sup> October 2022 aged 99, followed by cremation at the Kent and Sussex Crematorium.

# BLACKHAM VILLAGE CAFÉ AND MARKET



**Saturday 3rd December**  
**10am – 12:30pm**  
**Blackham Village Hall**



Meet your friends at our café

Enjoy filter coffee, tea, or a glass of mulled wine and a mince pie

Lots of lovely goodies on sale to get your Christmas shopping off to a great start

Local produce and hand-made gifts – as well as our usual great baked goodies;

bread, pasties, mince pies, Christmas Puddings,

handmade pottery, bee products, flowers and lots, lots more

We look forward to seeing you

***Blackham Village Hall is a registered charity whose sole purpose is to promote and maintain the hall for the enjoyment of and benefit of the community***



## Community Café **Saturday 10th December**

**10am til 12noon**

**Groombridge Village Hall TN3 9QX**

**All Are Welcome! This month hosted by:**



For more information visit: [www.withyhamparishcouncil.org.uk/community-information/whats-on](http://www.withyhamparishcouncil.org.uk/community-information/whats-on)



Or contact [administration@withyhamparishcouncil.org.uk](mailto:administration@withyhamparishcouncil.org.uk) 01892 864 557

**Facilitated by Withyham Parish Council**



# Church Calendar – January 2023

**St. Michael and All Angels, Withyham, with All Saints, Blackham**

*(all services at Withyham unless stated)*

<b>Sunday 1<sup>st</sup></b>	1 <sup>st</sup> after Christmas	9.45am	Zoom
		11.00am	Holy Communion
		6.30pm	Evensong
<b>Sunday 8<sup>th</sup></b>	1 <sup>st</sup> after Epiphany	11.00am	Plough Sunday Service
<b>Sunday 15<sup>th</sup></b>	2 <sup>nd</sup> after Epiphany	9.45am	Zoom
		11.00am	Matins
		6.30pm	Evensong
<b>Sunday 22<sup>nd</sup></b>	3 <sup>rd</sup> after Epiphany	9.45am	Half Hour Service
		11.00am	Matins
<b>Sunday 29<sup>th</sup></b>	4 <sup>th</sup> after Epiphany	9.45am	Zoom
		11.00am	Matins, at <b>Blackham</b>
		6.30pm	Evensong
<b>Sunday 5<sup>th</sup> Feb</b>	3 <sup>rd</sup> before Lent	9.45am	Zoom
		11.00am	Holy Communion
		6.30pm	Evensong

## Celebrating Christmas 2022 at Withyham & Blackham Churches

<b>Sunday 11<sup>th</sup> Dec</b>	<b>6.30pm</b>	<b>Carol Service, <u>Blackham</u></b>
<b>Saturday 17<sup>th</sup> Dec</b>	<b>6.00pm</b>	<b>Carol Singing, Buckhurst Park</b> <i>with Refreshments</i>
<b>Sunday 18<sup>th</sup> Dec</b>	<b>11.00am</b>	<b>Christingle Nativity Service</b> <i>Dress as Kings, Angels, Shepherds</i>
	<b>6.30pm</b>	<b>Carol Service, Withyham</b>
<b>Wednesday 21<sup>st</sup> Dec</b>	<b>6.00pm</b>	<b>The Outdoor Nativity</b>
Starting in Withyham Church then outside + mulled wine outside The Rectory		
<b>Saturday 24<sup>th</sup> Dec</b>	<b>4.00pm</b>	<b>Crib Service, Withyham</b>
<b>Christmas Eve</b>	<b>11.00pm</b>	<b>‘Midnight’ Communion, Withyham</b>
<b>Sunday 25<sup>th</sup> Dec</b>	<b>11.00am</b>	<b>Christmas Day Service, Withyham</b> with a short Communion Service



THE SUSSEX CHARITY FOR CHILDREN  
SINCE 1890

# Family Support Work November 2022 update

by Nikki Kerr,  
FSW Director of Fundraising & Marketing

Dear Friends,

It is hard to believe that we are almost at the end of the year. It really has flown by, as our work has totally returned to pre-Covid levels. Sadly the call on our work is increasing weekly as more and more referrals are coming through – almost three times as many as we were getting just before the pandemic took hold.

Nearly all of our practitioners have full caseloads as well as full waiting lists, but we are doing our very best to support as many families as possible without asking them to wait too long. Financial concerns as well as parenting issues continue to be the main reasons for referral, and our practitioners are spending most of their time helping families navigate increasingly complex forms, advocating for specialist school support for children with additional needs and providing a source of comfort and a safe space to let off steam.

We are busy preparing for Christmas parties and giving our children a day to remember. Parties are happening across Sussex, supported by local groups and of course our wonderful FSW volunteers. Thank you to anybody who is getting involved in this way.

We are also looking forward to our Candlelit Carol Service, which this year is taking place at St Peter's Church, Ashburnham on Thursday 8<sup>th</sup> December at 7pm. Reverend Gary Cregeen will lead the service and all are welcome. The church postcode is TN33 9NF and there are refreshments afterwards.

Advance registration welcomed for catering purposes – please visit [www.familysupportwork.org/events](http://www.familysupportwork.org/events) or phone 01273 832963

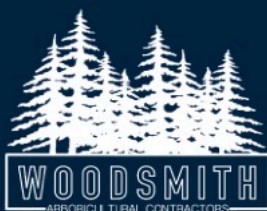
With many thanks for your continued support of Family Support Work's work in so many ways.

### **October's work in numbers**

- 178 individual visits and 680 calls with families supporting 223 adults and 163 children
- 31 supported meetings with other agencies
- 35 group sessions held supporting 611 parents and 450 children
- 158 food deliveries made

### **Prayer points**

- Give thanks for recent grant successes, and for the fundraising team working hard behind the scenes to meet targets this year
- Pray for practitioners who are dealing with very complicated and distressing family cases, that they are able to detach and maintain a work/life balance
- Pray for all the families who are using our Family Contact Centre in Eastbourne, that the difficulties in their relationships do not impact negatively on the children



## **PROFESSIONAL TREE CARE & RURAL SERVICES**

**HARTFIELD, EAST SUSSEX**

- ALL ASPECTS OF TREE SURGERY
- STUMP REMOVAL
- HEDGE CUTTING
- LAND, VEGETATION AND SCRUB CLEARANCE
- FORESTRY AND WOODLAND MANAGEMENT
- TREE AND HEDGE PLANTING
- FIREWOOD AND LOG SPLITTING SERVICES
- 24HR EMERGENCY CALL OUT

PROVIDERS OF PROFESSIONAL, RELIABLE & HONEST TREE CARE THROUGHOUT SUSSEX AND KENT. DELIVERING HIGH STANDARDS OF WORK TO DOMESTIC AND COMMERCIAL CLIENTS. FREE ADVICE, NO OBLIGATION QUOTES & HELPFUL GUIDANCE ON THE FUTURE MANAGEMENT OF YOUR TREES.

EMAIL - [DAN@WOODSMITHTREES.CO.UK](mailto:DAN@WOODSMITHTREES.CO.UK) MOBILE - 07772 926217  
WEBSITE - [WWW.WOODSMITHTREES.CO.UK](http://WWW.WOODSMITHTREES.CO.UK)



## NOTES FROM WITHYHAM PARISH COUNCIL

Withyham Parish Council serves residents of Blackham, New Groombridge (the East Sussex side of the River Grom), Marden's Hill (St John's, Crowborough) and Withyham.

**The Council met on Monday 14<sup>th</sup> November.**

Full action from this meeting is available at [www.withyhamparishcouncil.org.uk](http://www.withyhamparishcouncil.org.uk) and [www.facebook.com/WithyhamParishCouncil](https://www.facebook.com/WithyhamParishCouncil)

Minutes can also be obtained from the Clerks via the Parish Office.

**Prospective Councillors** – It was great to meet more people who are interested in becoming councillors. We currently have two vacancies in Groombridge ward and we intend to co-opt to these at our December Council meeting.

**Teasley Mead Play Equipment** – Following a request from a local resident we consulted with Blackham residents to see if they would support a piece of play equipment at the Teasley Mead Recreation Ground. 83.7% of respondents said that they would and, when asked what sort of equipment they would like, the majority wanted swings or a climbing frame. Council agreed to match fund a piece of equipment up to the value of £2,500 and we were really pleased to see some residents offer to help fundraise the rest of the funds. We look forward to working with them over the coming months.

**Unsung Helpers** – We are so lucky to have the support of so many of our parishioners on our committees and volunteer projects. In January we will take the opportunity to thank them personally at a small event for the first time since Covid-19. We look forward to having more volunteering opportunities available as we explore further priorities in our parish plan – watch this space!

**Community Warden Update** – We send our Community Warden, Chris, our best wishes as he recovers from a broken ankle.

**Parish Plan Progress** – The Council was really pleased to see the progress that has been made against the priorities that were outlined in our Community Parish Plan 2020-2024. We have identified tasks we would like to do to meet more of the aims between now and March 2024. If you are interested in seeing what we have done, and what we will be doing, please take a look at the plan on our website (About the Council/Forward for 5).



**Dates For Your Diary** – Please see the ads elsewhere in this magazine for further information about the Amblers and Community Cafe. The Amblers will be taking a break in December and then resuming on Saturday 21<sup>st</sup> January with a lovely walk in Withyham, to which everyone is welcome. The Community Café will be hosted by Groombridge Pre-School on Saturday 10<sup>th</sup> December and by the WI on Saturday 21<sup>st</sup> January. As always there will be delicious refreshments available so please come and enjoy some cake while supporting these local groups.

**The Next Council Meeting** – The last of 2022 will take place on Monday 12<sup>th</sup> December and the first of 2023 will be on Monday 9<sup>th</sup> January. Details of meetings and agendas for all our Council and Committee meetings can be found on our website or by contacting the Parish Office.

**Parish Office Christmas Closure** – The parish office will close from 2pm on Thursday 22<sup>nd</sup> December and reopen at 9.30am on Tuesday 3<sup>rd</sup> January while our staff take a well-earned break and recharge their batteries ahead of another busy year in the parish.

Any emails and phone messages to the parish office during that time will receive a response on their return.

In the meantime there is useful information available on our website [www.withyhamparishcouncil.org.uk](http://www.withyhamparishcouncil.org.uk)

As always, Highways related issues can be reported to East Sussex Highways at [www.eastsussexhighways.com](http://www.eastsussexhighways.com) or by calling 0345 6080193.

Emergencies can be reported to the police using 101 or 999 depending on the severity of your report.

We would like to wish you all a very Merry Christmas and a Happy New Year.

Di Kelly : Chair

Contact the Parish Office at 01892 864557 / [clerk@withyhamparishcouncil.org.uk](mailto:clerk@withyhamparishcouncil.org.uk)



## The Kings' Hall Withyham 100 Club

We are very grateful for everyone's support but are happy to encourage more local people to become members and help our fund raising for further maintenance and improvements. After three years, we have reached 100 members!!!!!! THANK YOU.

We are pleased to report that there are 2 December Bonuses as numbers are above 100! Each number costs £12 per year, if you would like to join, please contact Rick Hunnam (01892) 770347 or email [chair@withyhamvillagehall.co.uk](mailto:chair@withyhamvillagehall.co.uk).

### Winners for November 2022:

£20 Val Marshall  
£15 Sue Schooling  
£10 Christine Marais



### Winners for December 2022:

£20 Andy Medhurst  
£15 Alan Cowing  
£10 Linda Charlton

### December bonuses 2022:

£60 Alexander Bishop  
£30 Jill Pardey

## Forthcoming Events in the Withyham Village Hall

ACTIVITY TIME TUESDAYS 2.30pm

CHRISTMAS MARKET Saturday 26th November 11-4pm

FRIDAY CAFÉ 9th December 10:30am

CHRISTMAS LUNCH 15th December 12:15 for 12:30pm

CHRISTMAS CAROL CONCERT 22nd December 7pm

FRIDAY CAFÉ 13th January 10:30am

QUIZ 14th January 7.30pm

LUNCH 26th January 12:15 for 12:30

See our website for regular groups and clubs:  
[www.withyhamvillagehall.co.uk](http://www.withyhamvillagehall.co.uk)



# FRIDAY CAFE

A DEMENTIA FRIENDLY COMMUNITY CAFE

WHERE?  
Kings' Hall, Withyham

WHAT TIME?  
Between 10.30 - 12.00



**TEA  
CAKE  
COFFEE  
REMINISCENCE  
SINGING  
LAUGHTER  
CRAFTS  
QUIZZES  
TALKS  
CHAT  
FUN**

**WHO'S IT FOR?**  
For anyone, any age who would like to meet new people or catch up with old friends

**WHAT HAPPENS?**  
Tea, coffee and delicious homemade cakes are served in the first half of hour with plenty of time to chat, followed by a fun memory provoking or craft activity for the next hour

**2023 Dates**

10th January
10th February
10th March
10th April
12th May
9th June
14th July
11th August
8th September
15th October
10th November
8th December

**9th December 2022 activity is wreaths**

**INFORMATION**  
Please contact Anne Radford for more information on 07885 486733 or just come along on the day

This is a free service, funded by donations and volunteers. If you are a carer, please stay with the person you are bringing, we do hope that you will also enjoy your time with us. Open to anyone in the surrounding villages

**PLEASE HELP US TO SPREAD THE WORD**



Thanks to the following institutions for supporting our cafe

**FORGET ME NOT** **Wealden** **Dementia Friends** **Waitrose** **Morrisons**

# ACTIVITY TIME TUESDAYS

**ARTS/CRAFTS/  
PUZZLES/WORDSEARCH**

Calming activities to suit everyone of every ability. A dementia friendly pop-in group, stay for as long or as little as you like.

**KINGS' HALL WITHYHAM  
EVERY TUESDAY 2.30PM UNTIL 4PM**

We can provide craft and art equipment, puzzles and wordsearches but if you have something you are working on feel free to bring that along too.

There will be tea, coffee, biscuits and classical music.

Carers to stay please  
Suggested donation £2 per person

**FORGET ME NOT** **Wealden** **Dementia Friends** **Sponsored by Withyham Parish Council**

If you have any questions, if you would like to help or have a craft activity you would like to share with us, please contact Julie on 07584 013763

# ? QUIZ NIGHT

**SATURDAY  
14TH JANUARY**

7.30 for 8pm start ★ £10 per person  
Includes a 2-course Meal ★ Fantastic Raffle ★ Cash bar  
To Book a table call Rick on 01892 770347  
Kings' Hall, Withyham

# Rejoice with us!

THURSDAY 22<sup>ND</sup> DECEMBER  
AT 7PM.  
KINGS' HALL



CHRISTMAS CAROLS AROUND THE PIANO WITH  
WITHYHAM CHOIR - THE TREBLEMAKERS

£5 PER PERSON (INCLUDES MINCE PIE) - TICKETS FROM JULIE RUSE (07584-013763)  
CASH BAR SERVING MULLED STUFF, BEER, WINE AND FREE DRINKS FOR CHILDREN  
ALL PROFIT TO BE SPLIT BETWEEN ST MICHAEL'S PRIMARY SCHOOL AND THE KINGS' HALL





## **Community Café** **Saturday 21st January**

**10am til 12noon**

**Groombridge Village Hall TN3 9QX**

**All Are Welcome! This month hosted by:** **theWI**  
INSPIRING WOMEN



## **The Withyham Parish Amblers**

### **Saturday 21st January**

**Meeting at St Michaels Primary School  
TN7 4BP**

**9.00AM to walk at 9.15AM**



**Approx. 1hr 20. Suitable footwear recommended. Well behaved dogs welcome.**

For more information visit: [www.withyhamparishcouncil.org.uk/community-information/whats-on](http://www.withyhamparishcouncil.org.uk/community-information/whats-on)

Or contact [administration@withyhamparishcouncil.org.uk](mailto:administration@withyhamparishcouncil.org.uk) 01892 864 557



**Facilitated by Withyham Parish Council**

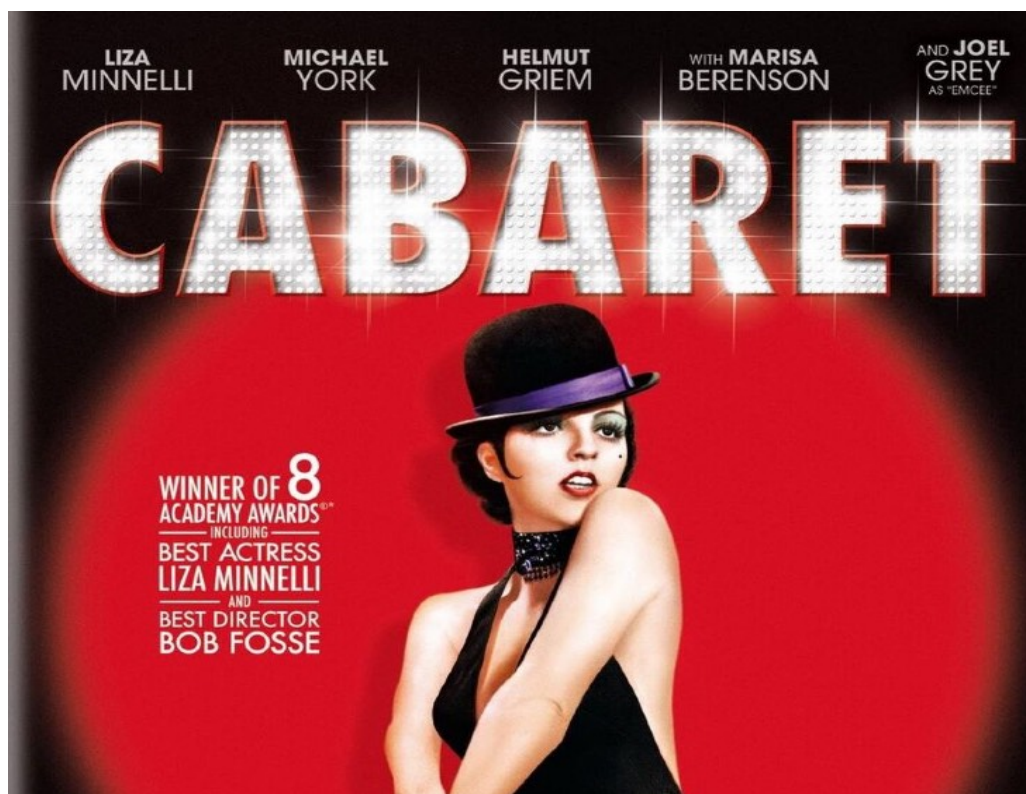
# GROOMBRIDGE FILM SOCIETY

Sunday 4<sup>th</sup> December in Groombridge Village Hall

## **Cabaret (15 certificate – 124 minutes)**

After eight Oscars and 50 years Bob Fosse's ground-breaking film has more than stood the test of time.

See Liza Minelli, Michael York and Joel Grey in a classic



Doors and bar open at 6:30pm, the film start at 7:15pm  
£2 for members (£20 per annum) and £6 for non-members

Come early to socialise and to enjoy our licensed bar

For more into contact Janet Sharples GFS Secretary at [horshar11gmail.com](mailto:horshar11gmail.com)

## **WEALD ROOFING SERVICES LTD**

For a complete roofing service, stripping and retiling  
Tiles and slates – Fibreglass flat roofing – Felt roofing  
Specialist lead works – Extensions & refurbishments  
Fully insured – All work guaranteed

**Contact David Nash for a free no-obligation quotation**  
**01892 619947 – 07983 413077**

(CHECKATRADE AND GUILD OF MASTER CRAFTSMEN AFFILIATED)

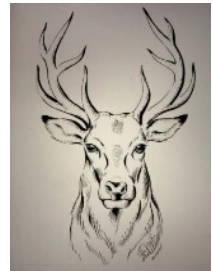
## **MEDHURST Funeral Directors**

**Hartfield: 01892-770253**

**East Grinstead: 01342-315880**

**Email: [r-medhurst@hotmail.com](mailto:r-medhurst@hotmail.com)**

**Proud to have served the Community for over 150 Years**



**Four Elms Catering**

**Karen Jackson - Proprietor**

**07734 007911**

**Fishersgate Cottage, Buckhurst Estate,**

**TN7 4BB**

**Email: [jacksonk60@aol.com](mailto:jacksonk60@aol.com)**

# Hospice in the Weald needs Van Drivers for the Christmas Tree collection appeal

by Janet Sharples

Hospice in the Weald is looking for businesses or individuals with vans and van drivers to volunteer for its Christmas Tree Collection initiative.

From 8-10<sup>th</sup> January the hospice will be collecting unwanted Christmas trees for a suggested donation of £15 per tree, the proceeds of which help fund vital work providing care and support completely free of charge to patients with a terminal illness – and those important to them – in West Kent and northern East Sussex.

Jesse Ansbro-Brett, Relationship Fundraising Manager, commented, “If you would like to help support our charity and you have a van, then we would love to hear from you. January is a great time to give back and we really need the help of some willing van drivers to support our very popular Christmas Tree Collection initiative.”

Collections will take place in the following postcode areas:  
TN1, TN2, TN4, TN9, TN10, TN11, TN12, TN13, TN14, TN15, and TN16.

If you can help – or know someone who can – please contact Jesse Ansbro-Brett, Relationship Fundraising Manager, on 01892 820 533 or email [fundraising@hospiceintheweald.org.uk](mailto:fundraising@hospiceintheweald.org.uk)





CLAIRE NASH  
SOLICITORS

## Can we help with your legal matters?

*Your local solicitor  
providing friendly and expert advice  
in Sussex and West Kent*

Caring and professional advice when you need it the most

- Probate
- Wills
- Lasting Powers of Attorney
- Equity Release
- Matrimonial

Office and home visits available,  
including out of hours if needed



Call Claire Nash Solicitors today  
for your **free initial consultation**  
on **01892 731082**

T: 01892 731082

E: [info@clairenashsolicitors.co.uk](mailto:info@clairenashsolicitors.co.uk)

W: [clairenashsolicitors.co.uk](http://clairenashsolicitors.co.uk)

Office 1, Clock House Court, Beacon Road,  
Crowborough, East Sussex, TN6 1AF

 Solicitors  
Regulation  
Authority  
SRA No: 643261

VAT Number 285 152495

Claire Nash Solicitors is a trading name of  
Claire Nash Solicitors LTD Co. No. 10958514  
Claire Nash Solicitors LTD is regulated by the  
Solicitors Regulation Authority in England  
and Wales. SRA No. 643261



## Groombridge and Hartfield Surgery Patients Participation Group by Tony Howell

A number of patients have asked about the future of the Groombridge Surgery.

The Practice has advised us that they expect there to be a GP Surgery in Groombridge for the foreseeable future. It is likely to continue to be open for at least three days a week with a mix of doctor and nurse appointments. However they say it is unlikely that Groombridge will be able to have a dispensary again.

We have asked the Practice if they will consider other arrangements that could enable patients to collect medication from Groombridge. We need to be aware, however that it is not just the logistics of such an arrangement that need to be considered, but medicines and patient safety and compliance issues are other relevant factors.

We understand that the building and decorating works at both surgeries should be completed by the end of November.

Remember the PPG is here to represent you so if you have any concerns or questions you would like to raise, please contact us at [gandhppg@outlook.com](mailto:gandhppg@outlook.com)



# Professional Garden Services

Garden & Border Maintenance

Grass Cutting • Tree Pruning

Hedge Trimming • Fencing

Decking • Patios

Water Gardens

Turfing • Planting & Pruning

Garden Tidy-ups

Outside Painting

**No job too big or small**

**Call Trevor**

(M) 07720 759512

(H) 01892 770051

Email:

**trev.wickens@btinternet.com**



Blackham, Tunbridge Wells,  
Kent. TN3 9UN  
[www.villagolfcourse.co.uk](http://www.villagolfcourse.co.uk)

**Enjoy a leisurely round of golf in this peaceful, Sussex village and discover what country life is all about.**

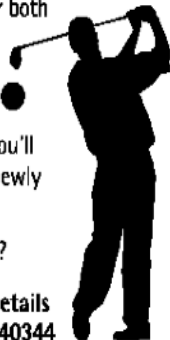
This panoramic, family run, nine hole course makes full use of the natural features of the valley it's set in - providing a genuine test of skill for both experienced and novice golfers.

Halfway between East Grinstead and Tunbridge Wells - set in the peaceful, village of Blackham - you'll receive a warm welcome at the newly refurbished club house.

Why not call in and play a round?

Membership available, call for details or to book tee times on 01892 740344

Pay & play • Buggy hire available • Groups & Societies welcome



## Tester&Jones

*Your local independent funeral service*

**Tel 01892 611811**  
(24 hours)

*"You were such a comfort to us when we needed it."*

When someone dies there must be time to grieve and reflect on the life we've lost - yet there are people to inform, forms to sign and a funeral to arrange. It's comforting to know that a local, independent and personal funeral service is available at the end of a phone - 24 hours a day.

- Memorial Masons
- 24 hour service
- Pre-paid funeral plans
- Bereavement Support Group
- Member of The National Society of Allied & Independent Funeral Directors

London Road, Crowborough  
East Sussex, TN6 2TT

E - [information@testerandjones.co.uk](mailto:information@testerandjones.co.uk)  
W - [www.testerandjones.co.uk](http://www.testerandjones.co.uk)

Golden Charter  
Funeral Plans



## **Crowborough Flower Club**

### **The Crowborough Flower Club Christmas**

**Demonstration is taking  
place on Thursday 1st  
December at the  
Crowborough Community  
Centre**

**Doors open 6.45pm**

**Ticket price £12**

**Demonstrator Stephen McDonnell  
(winner of best in Sussex show)**

**Refreshments, sales table and raffle**

## **January Issue?**

Please note that this edition of the magazine covers December and January. We hope you enjoy our Christmas and New Year special

We will be back in February, but until then, all of us wish all of you a peaceful festive season and a joyous New Year

Got an idea for an article, email us at  
**withyham.mag@gmail.com**



**Bright Idea**

## **THE ARTS SOCIETY – ASHDOWN FOREST**

**8th December at 2pm – Crowborough Community Centre, Pine Grove TN6 1FE**

**Lecturer: Barry Venning**

**Title: Christmas with Giles, Grandma and Family**

Our last lecture of 2022 features the cartoonist Carl Giles who was for many, as much a part of the festive season as the Christmas tree, crackers and the Queen's Speech. So popular were the Giles annuals as Christmas presents that they helped to make him Britain's best loved, most successful and wealthiest cartoonist. The talk looks at Giles's life and work with a particular emphasis on his seasonal cartoons, particularly those featuring Grandma and the Giles family. They include some of his funniest cartoons but, as the art historian William Feaver pointed out, they also demonstrate that he had few equals when it came to representing Britain in winter.

Barry Venning is an art historian whose interests and teaching range from the art of late medieval Europe to global contemporary art. He has published books, articles and exhibition catalogue essays on Turner, Constable and European landscape painting, but also has an ongoing research interest in postcolonial art and British visual satire. He works as a consultant and associate lecturer for the Open University. His media work includes TV documentaries, radio appearances and recordings.

Refreshments follow the lecture. Members free, Guests and Visitors £6.

To join, please contact our Membership Secretary on 01892 861015

For any further information, contact our Secretary on 07919 895113



## Nicki the Seamstress

Do you have a pile of sewing jobs that you never seem to get to?

Let me do them.

Any sewing alterations or repairs, all at very reasonable rates.

**I offer home consultations, with a collection and delivery service.**

**07871 808434 01892 770051**

[nickiwickens@btinternet.com](mailto:nickiwickens@btinternet.com)

## Kevin Wild Painting and Decorating

**Mobile 07766 404945**

## PENSHURST CHORAL SOCIETY



## Carol Concert

**Saturday 10 December 2022 at 6.30pm**  
St John the Baptist Church, Penshurst TN33 8JL



SCAN QR CODE TO BOOK: LIMITED TICKETS AVAILABLE  
Adults £25 Children £5 Family Ticket £35  
[www.penshurstchoralsociety.co.uk/concerts](http://www.penshurstchoralsociety.co.uk/concerts)

# JANIE PERRY NUTRITION

*Registered Nutritional Therapy Practitioner mBANT CNHC  
& Registered Homeopath MSECH MARH*

**Eat Better. Feel better.**

Weight Management. Exercise Nutrition.



[www.janieperry.co.uk](http://www.janieperry.co.uk)

+44 7796 174 264

[hello@janieperry.co.uk](mailto:hello@janieperry.co.uk)



# Groombridge Horticultural Society

by Sue Obbard



I can't believe it is already the end of the year; the time goes by so quickly. We've really enjoyed this year, being able to get back together for shows and talks after two years of not meeting up. All our events have been well attended with a lovely, happy atmosphere and the plant sales have been very successful (probably helped by the sun deciding to shine on us).

By the time you read this you may have forgotten the first fortnight of November, which was lovely and warm. It may be great for our wellbeing and heating bills, but it's potentially disastrous for nature. In over 60 years, I've never seen holly and brambles with flowers and fruit at the same time – even my apple trees have produced blossom!

We have a lot to look forward to in 2023, so please renew your society membership. It's just £3 per person, per year and includes a 10% discount at Royal Mires and Coolings Garden Centre – so well worth it. Please renew at any of our events, or contact Gwyneth, Ian or Lionel at The Homestead in Corseley Road.

## 2023 Programme

Thursday 19 <sup>th</sup> January	7:15pm	AGM
Thursday 16 <sup>th</sup> February	8:00pm	Graham Blunt from Plantbase
Thursday 9 <sup>th</sup> March	8:00pm	Simon Sutcliffe from Hever
Saturday 1 <sup>st</sup> April	2:00pm	Spring Show
Saturday 22 <sup>nd</sup> April	Coach trip to Batemans at Burwash	
Saturday 13 <sup>th</sup> May	9:00am – 12	Plant Sale
Saturday 5 <sup>th</sup> July	Coach trip to West Dean, near Chichester	
Saturday 9 <sup>th</sup> September	TBC	Autumn Show
Thursday 19 <sup>th</sup> October	8.00pm	Maureen Rainey from KWT
Thursday 16 <sup>th</sup> November	8.00pm	Christmas Floral Demo

If you have any queries, please see the website or telephone Gwyneth Davies on 01892 862430 or email [groombridgehorticulturalsociety@gmail.com](mailto:groombridgehorticulturalsociety@gmail.com)  
[www.groombridgehorticulturalsociety.co.uk](http://www.groombridgehorticulturalsociety.co.uk)



**Spa oil**  
— SERVICES —  
**Heating Oil**



Competitive prices  
Friendly, helpful service  
Red Diesel

**Call : 01892 615400**  
**[www.spaoilservices.co.uk](http://www.spaoilservices.co.uk)**

## KINGS' HALL, WITHYHAM

Your local village hall makes a great venue for Parties, Weddings, Anniversaries and Children's Parties. Hire it from only £10 per hour.

Bookings and enquiries (01892) 770035 or 770347  
or email Meg Stafford on [megstafford@me.com](mailto:megstafford@me.com)  
or Rick Hunnam on [rickhunnam@hotmail.com](mailto:rickhunnam@hotmail.com)

## *Creative Design & Print*

*Top quality - all under one roof*

### **Small Format**

Brochures • Manuals • Booklets • Leaflets  
Programmes • Order of Service  
Company Reports • Stationery • Canvas Prints  
Artists' Cards • Photographs copied/enlarged

### **Large Format**

Posters, Outdoor Signage • PVC & Roller Banners  
Architects' & Builders' Plans • Scanning

**plus 2D CAD Design**

**Design | Print | Large Format | CAD**

**EMS**  
designandprint

**01342 323700**  
**[emsdesignandprint.co.uk](http://emsdesignandprint.co.uk)**

Medway House, 18-22 Cantelupe Road, East Grinstead

Open 8.30 – 5pm  
Monday to Friday  
Parking on site



# COMPUTER CORNER

## Notifications: Putting A Sock In It by Roger Lyon



Website notifications are increasingly used to launch scams. Here is what to do...

When you visit a website you will usually receive two types of notices. First is the cookie notice that we love to hate. The second offers to shower you with news and updates long after you have wandered off and forgotten that the site ever existed. With dogged enthusiasm, the site will send

notification boxes to the corner of your screen. Whether these are updates about your Facebook nearest and dearest, or photos to embarrass you when the in-laws visit, or shameless efforts to persuade you that your computer has been hacked, the solution is the same: take control of website notifications.

You can choose which websites may send you notifications in your browser settings. You can find instructions to locate these settings in Chrome, for example, by searching for ‘chrome disable website notifications’. Then it is your choice about whether gently to prune the list of websites allowed to communicate with you – or block the stream of notifications altogether. If you choose the latter then remember to delete the list of currently permitted websites as well.

There may be some other interruptions that you would like to eliminate. How about curbing over-enthusiastic notices of arriving email or the curious snippets of news pop-up. Windows and Mac both offer useful gagging options in this regard.

In Windows, take a look in Settings > ‘Notifications and Actions’ where you can choose which programs may share their notifications with you. If you can bear to be parted from CandyCrush then this is the place for you. Macs have their own section for the same purpose at System Preferences > ‘Notifications & Focus’.

Blocking notifications is sadly not the same as avoiding tracking. The tracking industry continues to develop an impressive range of technologies to keep tabs on your website wanderings without relying on cookies. Your choice of browser matters in this area. I believe that the Brave browser is currently the only one to provide strong protection when measured against the tests offered by the *Electronic Freedom Foundation*. Could be worth a look.

## Lipreading Classes

Is your hearing not what it used to be?

***Let your eyes help your ears***

Build confidence and improve lipreading skills

Join at any time and learn in a friendly mixed ability group

**ALL WELCOME**

**2pm every Monday • The Garden Room • Forest Row Community Centre**

For more information please contact: Hilary Lagden

01825 724393 • 07971 708012

Email: [hilarylagden27@gmail.com](mailto:hilarylagden27@gmail.com)

ATLA Trained Lipreading Tutor



# **NIGEL DEAR**

**Painter**

**Decorator**

**INTERNAL & EXTERNAL**

**City & Guilds & Advanced Craft**

**01892 664698**

**07710 798553**

**'Meadowside'**

**Green Lane**

**Crowborough**

**East Sussex**

**TN6 2BT**



# **Hartfield Scaffolding**



**Local, Experienced, Affordable Scaffolding Service...**

**Contact Gavin on 07774 956597**

**Email: [gavin@hartfieldscaffolding.co.uk](mailto:gavin@hartfieldscaffolding.co.uk)**

**Website: [www.hartfieldscaffolding.co.uk](http://www.hartfieldscaffolding.co.uk)**

## **LAND DRAINAGE & TRENCHING**

**Ditching & Earth Moving**

**Water Supplies & Repair**

**Giles Swift**

**Tel: 01892 864754**

## Traditional Mole, Mice, Rabbit & Squirrel Catcher

Traditional methods only  
No poisons used

# PETER KING

Mobile: 07432 813614

Email:  
pkingmoles@outlook.com



**Frank A Rhodes**  
BUILDERS

HILL COTTAGE, FAIRVIEW LANE, CROWBOROUGH, TN6 1BT

Felt Roofing  
10 year guarantee  
Tiling – Slating  
New roofs or repairs  
New gutters or existing gutters cleaned  
Full service  
Free estimates

Tel: 01892 655238  
Mobile: 07811 588291



**D. Warneant**  
Painters and Decorators

Domestic & commercial

14 Mottefield, Hartfield  
East Sussex. TN7 4JF

Tel: 07774 780 020

## The Final Word... on Christmas by Robert Veitch

*Twinkle, Twinkle, Little Star*, *Away In A Manger*, *Wham's Last Christmas* or *Slade's* perennial glam rock classic might offer seasonal nostalgia and remind us of our youth of many years past. Each is a timeless classic of one sort or another, just as *It's a Wonderful Life* and *Die Hard* might be for others.

This year, what many of us in June expected to be *The Queen's Christmas Message* will become *The King's Christmas Message* and for the first time in British television history it will be the first televised broadcast from a male monarch. Queen Elizabeth II made her first televised broadcast in 1957 and with William and George in the line of succession, the next televised Christmas message from a Queen might not take place until the 22<sup>nd</sup> century. Mind you, by then television might not exist, although fingers crossed, we might all be flying to work (from home in the garden shed) on the jetpacks we were promised way back in the 1950's.

In this house, the annual outing of *A Charlie Brown Christmas* covers all bases, gooey sentimentality, easy going timeless humour, a memorable soundtrack, plus the true meaning of Christmas – and Snoopy's presence ensures it always remains uber-cool. Give it a go. Merry Christmas!



## DAVID NEWCOMBE TREE SERVICES

A friendly and professional service

All aspects of tree surgery and hedge trimming undertaken

Covering Sussex, Kent and London

Withyham, East Sussex

Tel: 01892 770996 - Mobile: 0777 1711094 email: [dntreeservices@gmail.com](mailto:dntreeservices@gmail.com)

Qualified Tree Surgeon • Established 1996 • City and Guilds • Fully Insured

## ALAN HOLLOWAY

ARCHITECTURAL TECHNICIAN

DESIGN SERVICES (EXTENSIONS & NEW BUILDS)

PLANNING & BUILDING REGS APPLICATIONS

TOPOGRAPHICAL & MEASURED SURVEYS

FOR A FREE CONSULTATION RING 07870 569550 OR 01892 770649

Email: [alanholloway47@btinternet.com](mailto:alanholloway47@btinternet.com)

## J & H FRIEND

ESTD 1860

REMOVALS, STORAGE, SELF STORAGE  
ARCHIVE STORAGE, PACKAGING SUPPLIES  
FOREST ROW  
EAST SUSSEX

TEL: 01342 822608 EMAIL: [info@friendsremovals.co.uk](mailto:info@friendsremovals.co.uk)

[www.friendsremovals.co.uk](http://www.friendsremovals.co.uk)

## HEVER LANDSCAPES LTD

We offer year-round garden management, regular garden maintenance or a one-off garden tidy/clearance, grass cutting, lawn care, hedge cutting, leaf clearing construction of vegetable patches, chicken runs, compost bins, and commercial contracts.

We also offer complete landscaping projects, such as patios, paths, retaining walls, all types of fencing, planting schemes, re-seeding, turfing, water features, wooden garden structures, tree surgery, hedge laying and woodland management or clearance.

01892 740133

[www.heverlandscapes.co.uk](http://www.heverlandscapes.co.uk)

07909 916909

email: [karl.hever.landscapes@gmail.com](mailto:karl.hever.landscapes@gmail.com)



## Local Information

<b>Kings' Hall, Withyham</b>	chair@withyhamvillagehall.co.uk bookings@withyhamvillagehall.co.uk	
Chairman:	Rick Hunnam	01892 770347
Lettings:	Mrs Meg Stafford	01892 770035
<b>Blackham Village Hall</b>	venues4hire.org/venue/details4815	
Bookings:	Mrs P Hawes blackhamvillagehall@gmail.com	01892 740574
<b>Groombridge &amp; Hartfield Medical Practice</b>	Withyham Road, Groombridge, TN3 9QP Old Crown Farm, High Street, Hartfield, TN7 4AD	01892 863326
<b>Beacon Surgery</b> , Beacon Road, Crowborough, TN6 1AH		01892 652233
<b>Saxonbury House Medical Group</b> , Croft Road, Crowborough		01892 603131
<b>St Michael's Primary School</b>	Mrs Katie O'Shea (Headteacher)	01892 770307
<b>Withyham Art Group</b>	Ali Hunnam	01892 770347
<b>Dorset Arms Angling Club</b>	Keith Grose	01892 652631
<b>Withyham Cricket Club</b>	Peter Hamerton	01892 655932
<b>Blackham Country Players</b>	Linda Weekes	01892 740261
<b>Citizens' Advice Bureau</b> , Crowborough		01892 655303
<b>Withyham Parish Charity</b>	<i>Trust providing financial help for those in need</i> Applications should be made to Richard Halcrow	01892 770607
<b>Withyham Parish Council (WPC)</b>	The Old Station, Groombridge, TN3 9RD www.withyhamparishcouncil.org.uk clerk@withyhamparishcouncil.org.uk WPC Office hours: Monday 12:00 - 17:00 Tuesday - Friday* 09:30 - 12:00 *closed on Wednesdays during school holidays.	01892 864557
<b>Telephone numbers for the reporting of incidents</b>	Highway lights and footpath damage (location and problem) Vandalism and Abandoned Vehicles (all relevant details) Waste collection queries Trading Standards Problems can also be reported to: eastsussex.gov.uk/fixmystreet	03456 080193 01243 642222 03456 080193 03456 080197
<b>Magazine Editor</b>	Robert Veitch withyham.mag@gmail.com	
<b>Advertising</b>	Anne Barker annebarker1941@gmail.com	01892 661393
<b>Distribution</b>	Janet Funnell janet.funnell@btinternet.com	01892 663512
<b>Circulation</b>	375 printed and delivered individually	